



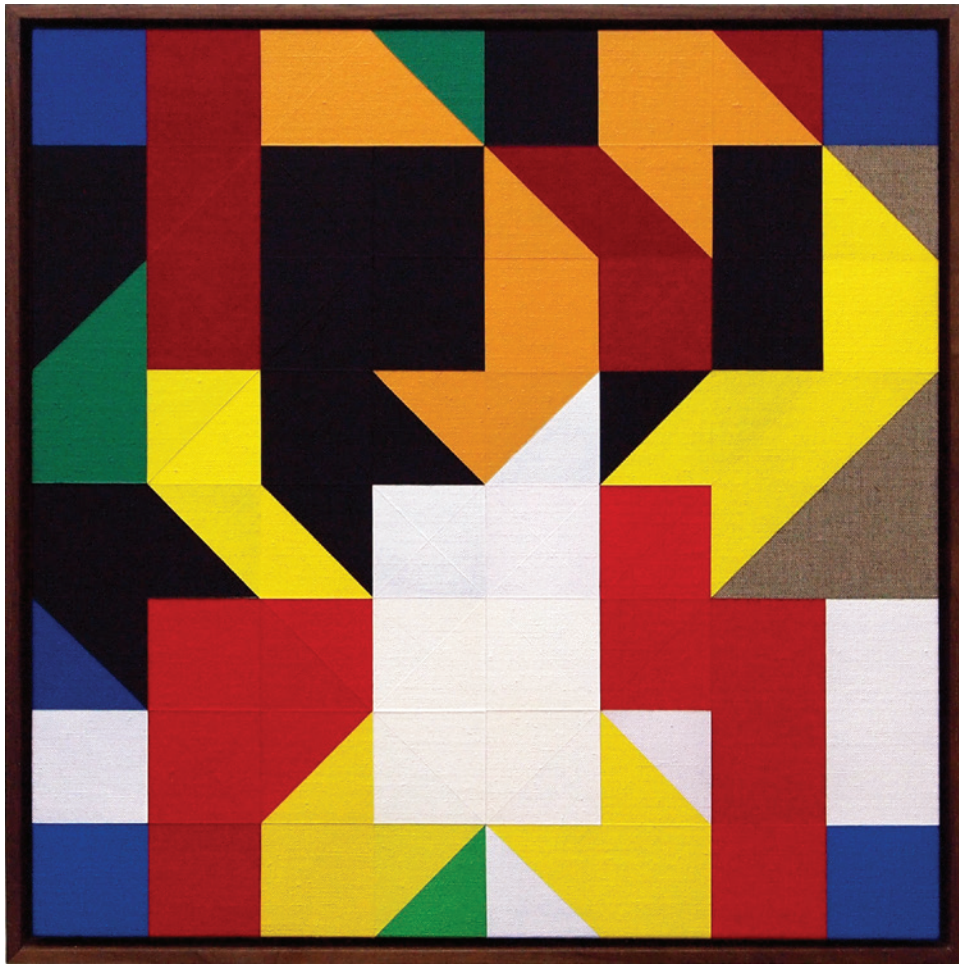
TOM HACKNEY

CORRESPONDING SQUARES

Painting the Chess Games

of Marcel Duchamp

May 19 - September 11, 2016



Chess Painting No. 54
(Michel vs. Duchamp, Strasbourg, 1924), 2015
 Gesso and acrylic on linen, walnut frame
 16 ½ x 16 ½ in.
 Collection of Andrew Molyneux

Edmund Michel vs. Marcel Duchamp
Strasbourg, 1924

1. e4	c5	14. Bxg7	Kxg7	27. Rxb3	c4
2. Nf3	Nc6	15. Rab1	a5	28. Ra2	Qc7
3. Nc3	d6	16. Nc1	a4	29. Rbb2	cxd3
4. d4	cxd4	17. b3	Rfb8	30. Nd1	Nd7
5. Nxd4	g6	18. N1e2	axb3	31. Rd2	Qc5+
6. Bb5	Bd7	19. cxb3	Ra3	32. Nf2	Qe3
7. 0-0	Bg7	20. Rfd1	Qa5	33. h3	Nc5
8. Be3	Nf6	21. Qb2	Bc8	34. Kh1	f5
9. f3	0-0	22. Nf4	Be6	35. exf5	gxf5
10. Qd2	Qa5	23. Rd2	Rb4	36. f4	e5
11. Nb3	Qc7	24. Nd3	Rbxb3		
12. Bxc6	bxc6	25. axb3	Rxb3		
13. Bh6	c5	26. Qxb3	Bxb3		

0-1

TOM HACKNEY

CORRESPONDING SQUARES

Painting the Chess Games of Marcel Duchamp

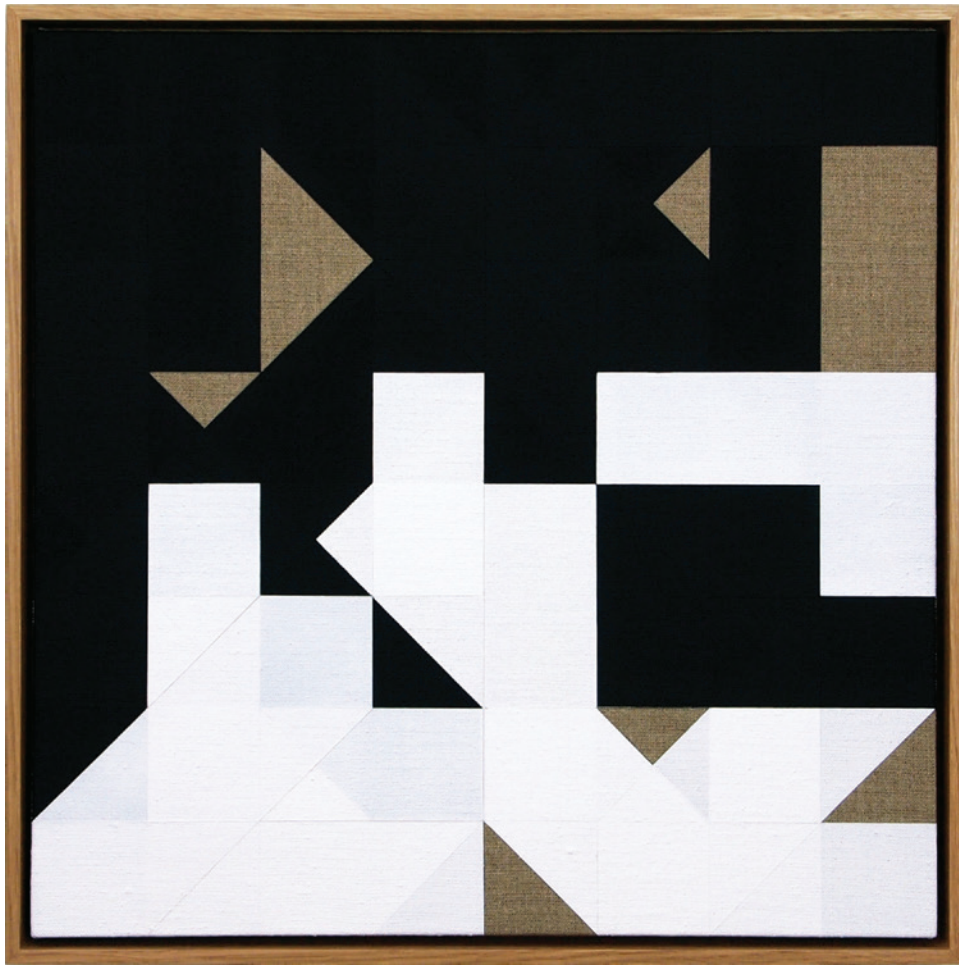
With a mission to interpret the game of chess and its cultural and artistic significance, the World Chess Hall of Fame is honored to present Tom Hackney's first solo exhibition in the United States. *Tom Hackney: Corresponding Squares: Painting the Chess Games of Marcel Duchamp* was organized in collaboration with Francis M. Naumann Fine Art, New York. Hackney is a young British painter who has created geometric abstractions based on the movements of pieces in chess games. In the case of the present exhibition, the games were played by the celebrated French artist and chess player, Marcel Duchamp (1887-1968). In a speech at the New York State Chess Association in 1952, Duchamp remarked that playing a game of chess was like making a drawing. "The chess pieces are the block alphabet which shapes thoughts; and these thoughts, although making a visual design on the chessboard, express their beauty abstractly, like a poem." In Hackney's pictures, the beauty of those games is captured and made visible in a single static image. It was Duchamp's goal to elevate art from a purely visual experience to something more cerebral, an aspiration that Hackney unquestionably accomplishes in these paintings whose beauty is generated entirely by ideas that took place on the 64 squares of a chessboard.

Having called his exhibition *Corresponding Squares*, Hackney subtly alludes to the book about endgame strategy, *Opposition and Sister Squares Are Reconciled* (1932) that Duchamp wrote with the Russian-born chess master Vitaly Halberstadt (1903-1967). Hackney chose the word "corresponding" to suggest that he has entered into a conversation with Duchamp's games, an exchange that continues as chess players contemplate and attempt to decipher the moves that generated the rectilinear and diagonal patterns he has so skillfully and gracefully recorded. The paintings are made in black and white (like opposing chess pieces) or in color, based on a color-coded chess set that Duchamp designed in 1920.

Tom Hackney opened with great success at the Naumann gallery on March 18, 2016. The Saint Louis exhibition contains an added section of Duchamp history, photographs, and objects, which highlight the connection and inspiration his enduring legacy had on Hackney and his work. Additional contributions to the exhibition are essays, catalogue, and programming from Dr. Bradley Bailey, Associate Professor of Art History at Saint Louis University and Duchamp scholar, and Chess Champion and author Jennifer Shahade. This project marks the second collaboration between the Saint Louis Chess Campus and Francis M. Naumann Fine Art. *Marcel Duchamp: Chess Master* (2009), curated by Bradley Bailey, traveled from the Saint Louis University Museum of Art to Francis M. Naumann Fine Art. Bailey and Naumann wrote the accompanying catalogue *Marcel Duchamp: The Art of Chess* with game analysis by Jennifer Shahade.

Shannon Bailey
 Chief Curator
 World Chess Hall of Fame, Saint Louis

Francis M. Naumann
 Owner and Director
 Francis M. Naumann Fine Art, New York



Chess Painting No. 64
(Duchamp vs. Znosko-Borovsky, Paris, 1929), 2015
 Gesso on linen, oak frame
 16 ½ x 16 ½ in.
 Courtesy of Francis M. Naumann Fine Art, New York

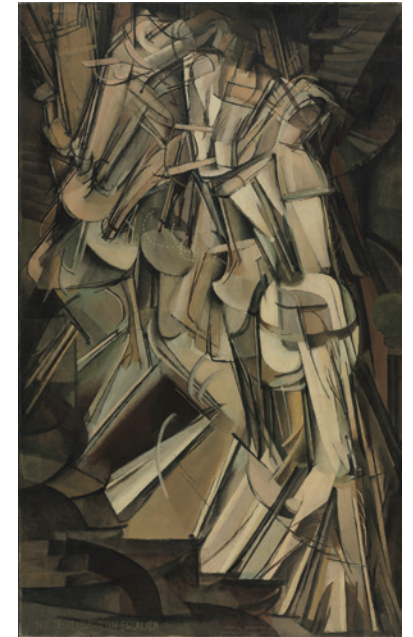
Marcel Duchamp vs. Eugene Aleksandrovich Znosko-Borovsky Paris, 1929

1. d4	Nf6	8. d5	0-0	15. Bf1	Na6
2. Nf3	e6	9. Be4	a5	16. Bxh3	Nxh3
3. c4	Bb4+	10. b4	axb4	17. Nf5	Qf6
4. Bd2	Qe7	11. axb4	Rxa1	18. Qc3	Kh8
5. a3	Bxd2+	12. Qxa1	Nh5	19. Rf1	
6. Nbx d2	d6	13. g3	Bh3		0-1
7. e4	e5	14. Nh4	Nf4		

Layered Meaning

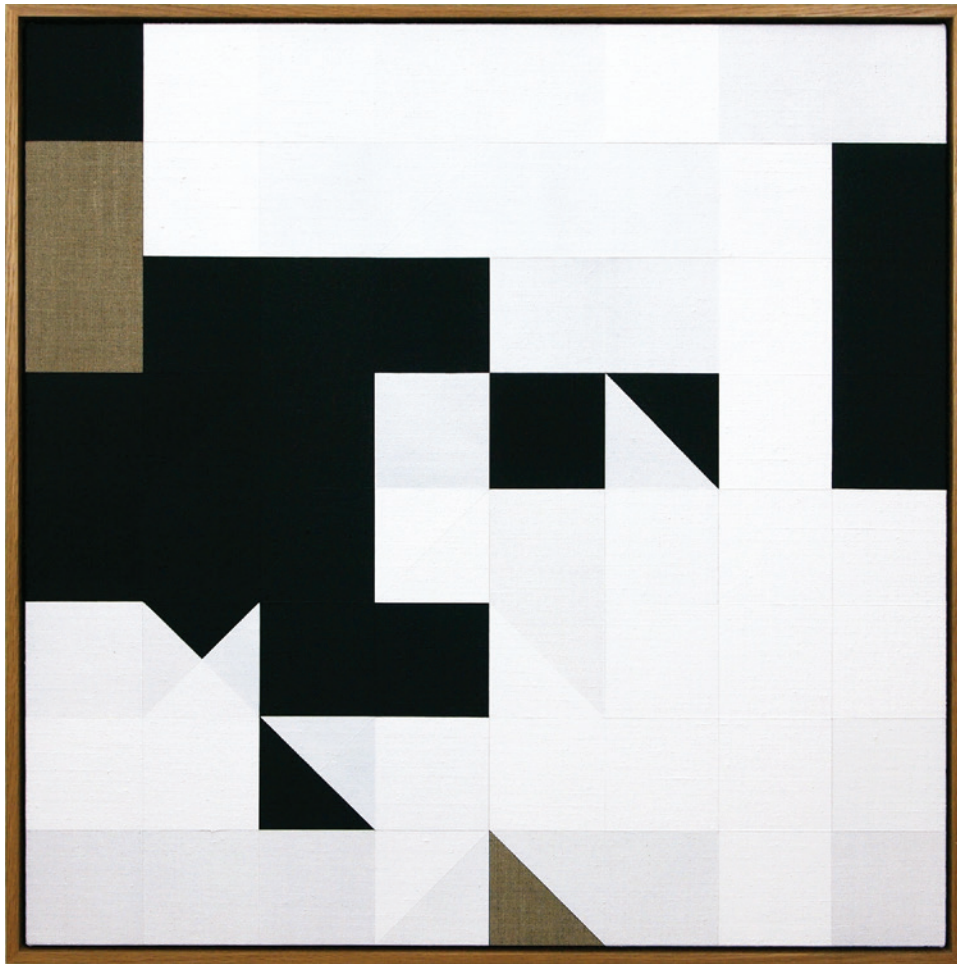
By Bradley Bailey, Associate Professor of Art History, Saint Louis University

Considered by many to be the most influential artist of the 20th century, Marcel Duchamp effectively transformed the way we think about what an artist is and what an artist does. He achieved some notoriety early in the century as an avant-garde painter, particularly with the splash he made with his infamous painting *Nude Descending a Staircase, No. 2*, a cubist-inspired effort to render the movement of a figure through space that became the *succès de scandale* of the legendary Armory Show in New York in 1913. But by far his most important and controversial contribution to the history of art was his abandonment of painting to explore the concept of the readymade, which is an object—typically mass-produced—that is taken from material culture and transformed into a work of art simply through its selection by an artist and the context of its display. It is virtually impossible to consider the advancement of such later twentieth-century art movements as Pop, Minimalism, and Conceptualism without the introduction of the readymade.



Marcel Duchamp
Nude Descending a Staircase (No. 2), 1912
 Oil on canvas
 Philadelphia Museum of Art
 The Louise and Walter Arensberg Collection, 1950
 1950-134-59
 © Succession Marcel Duchamp / ADAGP, Paris / Artists Rights Society (ARS), New York 2016

A substantial portion of what the readymade was all about was Duchamp's attempt to establish that what an artist *does* can be as or even more important than what an artist *makes*, which is the more traditional, artisanal understanding of artistic production. Case in point, Duchamp all but ceased producing art in the early 1920s in order to dedicate himself full-time to becoming a chess master and winning the French Chess Championship. This was a conscious decision to reinvent himself, and this process of reinvention was, in itself, an artistic act for Duchamp. But Duchamp even saw the latent aesthetic properties of playing chess, as he suggested during a 1959 interview with Truman Capote, "Why isn't my chess playing an art activity? A chess game is very plastic. You construct it. It's mechanical sculpture and with chess one creates beautiful problems and that beauty is made with the head and hands." He sank himself so deeply into the game that many were convinced he actually had ceased to be an artist. While his chess achievements were modest by grandmaster standards, they were remarkable for a largely self-taught player who did not enter into the competitive arena until his mid-thirties, achieving master status at the relatively advanced age of 38. His most important accomplishments include winning the Chess Championship of Haute-Normandie in 1924, draws against such greats as Savielly Tartakower, Vera Menchik, Eugène Znosko-Borovsky, and the illustrious American Grandmaster Frank Marshall, and a victory over the brilliant blindfold exhibitionist George Koltanowski. Duchamp also made significant contributions to the chess community through the written word, authoring a chess column in the Parisian daily newspaper *Ce Soir*, translating Znosko-Borovsky's book on chess openings into French, and coauthoring a book on endgame tactics with Vitaly Halberstadt titled *L'Opposition et les cases conjuguées sont réconciliées (Opposition and Sister Squares Are Reconciled)*.



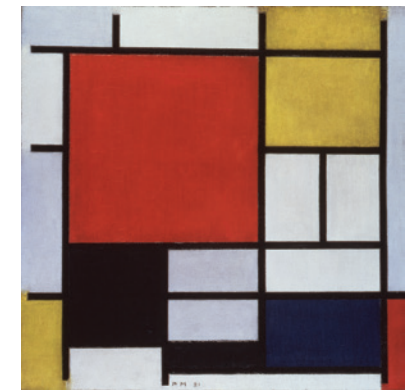
Chess Painting No. 67
(Kmoch vs. Duchamp, Hamburg, 1930), 2016
 Gesso on linen, oak frame
 26 x 26 in.
 Courtesy of Francis M. Naumann Fine Art, New York

**Hans Kmoch vs. Marcel Duchamp
 Hamburg, 1930**

1. d4	Nf6	13. f4	Nf6	25. Qxd2	Rc8
2. c4	e6	14. f5	Nh7	26. Rhg1	Qxc3
3. Nc3	Bb4	15. h4	f6	27. Rxc7+	Rxc7
4. a3	Bxc3+	16. g4	Rf7	28. Rxc7+	Kh8
5. bxc3	b6	17. Nh3	Bb7	29. Qxc3	Rxc3
6. f3	d6	18. g5	fxg5	30. Rxb7	Rxd3
7. Nh3	h6	19. hxg5	Rd7	31. Rb8+	Nf8
8. e4	0-0	20. Ra2	c6	32. Rxf8+	Kh7
9. Bd3	e5	21. Rg2	Qc7	33. Ng5+	Kxh6
10. Nf2	Nh5	22. Bd2	cxd5	34. Ne6	Kh5
11. g3	Nc6	23. cxd5	Nc4	35. Rh8+	
12. d5	Na5	24. gxh6	Nxd2		1-0

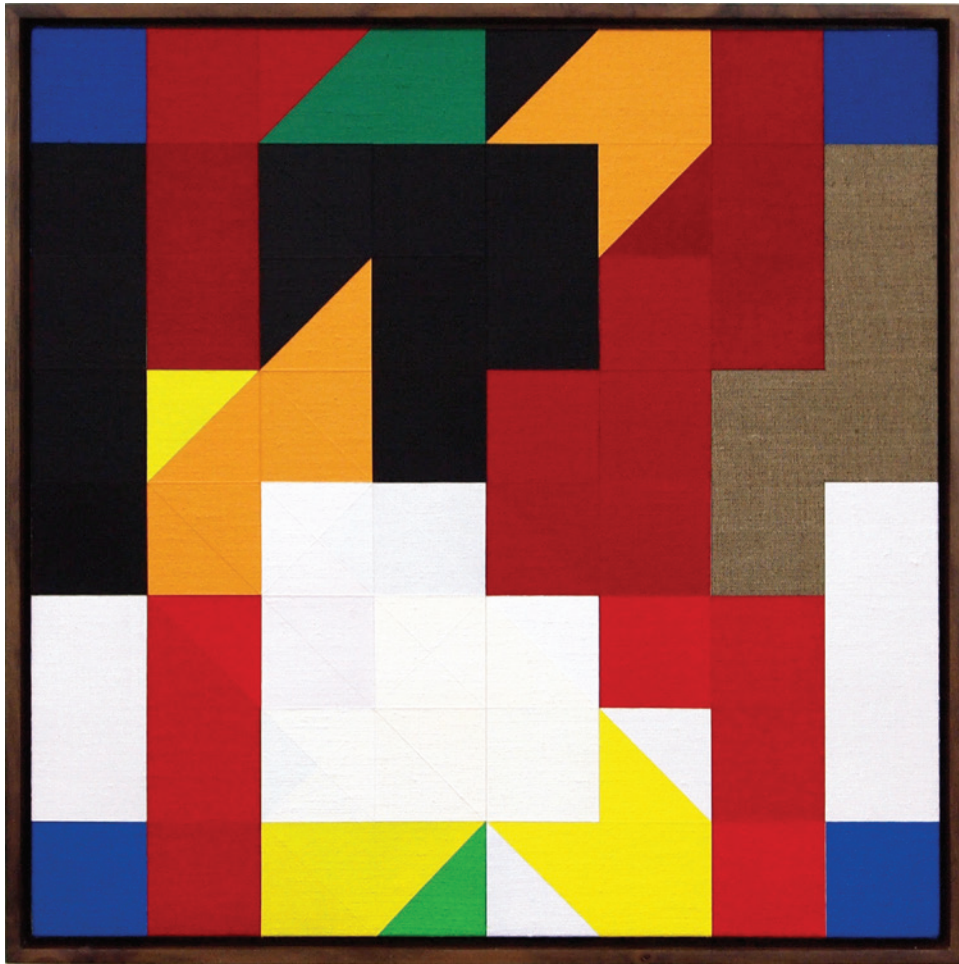
Yet it was Duchamp's renunciation of art for chess that most inspired the artist Tom Hackney to engage with the former artist's unusual path to chess mastery. "The idea for the chess paintings came out of my time at Goldsmiths [University of London], partly as a reflection on the strategic language applied in art discourse. I was also interested in Marcel Duchamp's abandonment of art for chess—a 'move' in itself and something viewed as a direct challenge to the whole enterprise of painting. These elements combined, paradoxically, opened up a space for painting. Both activities (chess and painting) share an oscillation between the arenas of the eye and of the mind." Hackney's assessment echoes similar ideas from one of Duchamp's reflections on the relationship between art and chess, "Chess has the visual possibilities of art. It is a mechanistic sculpture that presents exciting plastic values. If you know the game you can feel that the bishop is like a lever. It incites a whole new pattern when moved. There is a mental end implied when you look at the formation of the pieces on the board. The transformation of the visual aspect to the grey matter is what always happens in chess and what should happen in art."

Patterns of movement are fundamental to Hackney's process, as he traces the abstract ballet of Duchamp's chess scores onto the canvas. In doing so, he underscores the virtually infinite number of possible moves in chess, and, by extension, the limitless number of abstract compositions that can result from this resource. Unlike early 20th-century abstract painters like Piet Mondrian, who subjectively arranged geometric shapes in grid formations to arrive at a composition that he considered balanced and unified, Hackney works with a predetermined data set that he maps out on the 64 squares of the canvas. Hackney begins with an unprimed, stretched linen canvas, on which he draws a light grid in pencil. He then takes the moves from a preselected chess game and uses them to determine the placement of his painted forms by plotting the movements of the chessmen on the grid. The path of each move on the board is plotted, masked, and painted with a roller in sequence, from the opening move to the last. The width of the line representing each move is determined by the dimensions of the square; diagonal moves are wider than horizontal or vertical ones because diagonal moves derive from the hypotenuse of the square, while horizontal and vertical moves are the width of one side. The paths of the moves are painted in black or white gesso, a chalky painting material traditionally used to prepare or "prime" a surface (as it was the first or primary layer of paint) so that the successive layers of paint would adhere to it. While the black is opaque, and therefore conceals anything under the painted surface, the white gesso is translucent, and thus subtly reveals prior moves—the more saturated the whiteness of a painted area, the more passes it contains. Similarly, areas of gray result from regions in which the trail of white pieces have passed over those of black pieces, which hints at the potential value spectrum between white and black that is—much like the number of moves in the chess game—virtually limitless. The areas that are not traversed by any moves retain the taupe hue of the bare canvas, adding color to the otherwise achromatic design. Hackney's use of gesso points to both material and symbolic elements in his work. According to the artist, the purpose of the gesso "is structural rather than visual—it is the material that exists beneath the surface of most of the paintings ever created.



Piet Mondrian
Composition with Large Red Plane, Yellow, Black, Grey and Blue, 1921
 Oil on canvas
 23 3/8 x 23 3/8 in.
 Gravenhage, Haags Gemeentemuseum, Holland
 ©2016 Mondrian/Holtzman Trust

it is the material that exists beneath the surface of most of the paintings ever created.



Chess Painting No. 61
(Duchamp vs. Hanauer, New York, 1952), 2015
 Gesso and acrylic on linen, walnut frame
 16 ½ x 16 ½ in.
 Courtesy of Francis M. Naumann Fine Art, New York

Marcel Duchamp vs. Milton Loeb Hanauer
New York, 1952

1. d4	Nf6	12. exd4	Nf6	23. Nc6	Qb6
2. Nf3	d5	13. c5	a5	24. Rc5	Na6
3. c4	e6	14. 0-0	a4	25. Bxa6	Rxa6
4. Nc3	Bb4	15. Ne5	g6	26. Rfc1	Raa8
5. Bd2	0-0	16. Bb5	Qa5	27. h4	Kg7
6. e3	c5	17. Qe2	Qc7	28. Nb4	Rae8
7. a3	Bxc3	18. Rac1	Nd7	29. Qa6	Qb8
8. Bxc3	Ne4	19. f4	f6	30. Rc7	Rf7
9. Qc2	cxd4	20. Nd3	Nb8	31. Qd6	Ree7
10. Bxd4	Nc6	21. Nb4	Bd7	32. Rxd7	
11. Bd3	Nxd4	22. c6	bxc6		1-0

Similarly, I feel Duchamp's works and ideas leave a legacy of underlying structures in much of the art made after his life—especially with regard to the challenges posed to painting by the readymade. This aspect is the basis of all of the chess paintings.”

Hackney followed the black-and-white canvases with more colorful designs, based not only on Duchamp's games, but also on a unique proposal for a chess set that Duchamp first suggested in 1920. The design of the set itself is rather conventional, unusually so for someone of Duchamp's rebellious nature, but the twist that he proposed that made this design exceptional was not one of shape, but of color. In this set, color signifies the moves of the queen, bishop, knight, and rook, while the kings and pawns remained the traditional black and white. The queens are colored a lighter and darker tint of green, as the potential movement of the piece encompasses the movements of both the rook and bishop, which are colored lighter and darker blues and yellows, respectively. The knight, whose distinctive path shares no characteristics with the other pieces, is colored in different values of red. Duchamp's plan was to market this chess set using the name of one of the greatest players of the day, the aforementioned Frank Marshall, whose famous chess club in New York counted Duchamp among its membership. While it is unknown whether this business venture was ever even proposed to Marshall, a description of a “beautiful set of painted chessmen” that Henri-Pierre Roché saw in Duchamp's Paris apartment in 1922 suggests that at least one set of “Marshall's Chessmen” was produced, though there are no known versions of this color-coded set in existence today.



Reconstruction of Marcel Duchamp's Color Chess Set, 2016
 Courtesy of Tom Hackney
 Chess set concept and design: © Succession Marcel Duchamp / ADAGP, Paris / Artists Rights Society (ARS), New York 2016

The color canvases follow a procedure that is similarly predetermined, though in this case the order is changed. In the black-and-white paintings, the application of gesso follows from the first move of the chess game to the last, whereas in the color paintings, bright swatches of acrylic or oil paint describe the contest beginning with the last move and ending with the first. According to Hackney, “My reason for this was to explore the composition brought about by various openings—where the course of each game takes so many twists as to deliver a specific, unique end, the opening of each game is made according to a smaller set of conventional ‘theory-based’ openings. In the paintings, one result of this is that certain openings are much more detectable in the colour paintings, thus the works become visually more similar—like minor variations on a theme.” As with the black-and-white paintings, the serial nature of the color paintings is also critical, as much of the understanding of these works comes with the recognition of nuanced disparities from canvas to canvas that both art and chess aficionados may appreciate, though not necessarily for the same reasons.

While Duchamp became the primary inspiration for Hackney's chess paintings, the series did not begin exclusively with the artist's games. The first three paintings were derived from, respectively, Game 4 of the so-called “Match of the Century” between Bobby Fischer and Boris Spassky at the 1972 World Chess Championship, the first game in Garry Kasparov's epoch-making, man-versus-machine bout against the chess-playing computer Deep Blue in 1996 (Kasparov lost the game but triumphed in the match), and the



Chess Painting No. 2
(Duchamp vs. Crepeaux, Nice, 1925), 2009
 Gesso on linen, oak frame
 12 ½ x 12 ½ in.
 Collection of Dr. Ed Krčma

Marcel Duchamp vs. Robert Crepeaux
Nice, 1925

1. d4	Nf6	14. a4	c6	27. Kh1	Qxd5
2. c4	e5	15. a5	Bc7	28. Ne4	Nd4
3. dxe5	Ng4	16. b5	d5	29. Nxd4	Bxd4
4. e4	h5	17. cxd5	cxd5	30. Rc1	Qxe4
5. Be2	Nc6	18. b6	axb6	31. Qc7+	Ke8
6. e6	Qf6	19. axb6	Bxb6	32. Qb8+	Kf7
7. exf7+	Qxf7	20. Ra8+	Kc7	33. Qc7+	Kg6
8. Nf3	Bc5	21. Qc2+	Nc6	34. f3	Nf2+
9. 0-0	d6	22. Bxd8+	Rxd8	35. Kg1	Qe3
10. Bg5	Be6	23. Rxd8	Kxd8	36. Qc2+	Nd3+
11. Nbd2	Ne7	24. exd5	Bxd5		
12. a3	0-0-0	25. Bc4	Nd4		
13. b4	Bb6	26. Bxd5	Ne2+		

0-1

considerably less historic meeting of Duchamp and then-French champion Robert Crepeaux at the French Chess Championship in Nice in 1925. While the latter game may not be on par historically or competitively with the other two games that began this series, the Crepeaux game is momentous in the annals of Duchamp's chess career, as it represents the closest Duchamp would ever come to achieving his goal of becoming the French chess champion. Though he lost this game to the eventual-champion Crepeaux and certainly had better games against arguably better opponents, this game is more significant for what it represents as perhaps the apogee of his chess career.



Arnold Rosenberg
Marcel Duchamp, 1958 / printed 2015
 Selenium toned silver gelatin print
 Image: 12 x 12 in. (30.5 x 30.5 cm)
 Paper: 20 x 16 in. (50.8 x 40.6 cm)
 Edition of 16 with 3 APs
 Titled, dated, numbered and stamped on verso
 © Sean Kelly, New York
 Courtesy: Sean Kelly, New York

Hackney's chess paintings virtually make literal the formal and strategic potential that Duchamp once claimed a visual transcription of chess could yield:

Objectively, a game of chess looks very much like a pen-and-ink drawing, with the difference, however, that the chess player paints with black-and-white forms already prepared instead of inventing forms as does the artist. The design thus formed on the chessboard has apparently no visual aesthetic value and is more like a score for music which can be played again and again. Beauty in chess does not seem to be a visual experience as in painting. Beauty in chess is closer to beauty in poetry; the chess pieces are the block alphabet which shapes thoughts; and these thoughts, although making a visual design on the chessboard, express their beauty abstractly, like a poem.

Particularly remarkable about Hackney's paintings is the surprising amount of variation seen in the series, a testament to the success of his process in eliciting visually distinct statements under such severe formal constrictions. For Hackney, both painting and Duchamp's chess games function like readymade materials—the beauty is in the unexpected brilliance of their synthesis. Like the artful chess player's sacrifice of a pivotal piece, Hackney's process requires a tremendous sacrifice of aesthetic subjectivity, as he executes the procedure with the necessary impartiality to make the system work. "My authorship seems to take place conceptually, before the painting materializes," Hackney once remarked. "In this respect, failure is neutral—that's not really where my concern rests in this work." While it is tempting here to reference Duchamp biographer Robert Lebel's observation that the French word for chess, *échecs*, also means failures, it is vital to reiterate that the "success" or "failure" of Hackney's paintings in the traditional sense that an artist like Mondrian might have understood it requires a vastly different set of aesthetic criteria in order to make such a judgment, the same way that the readymade necessitated an entirely new aesthetic vocabulary in order to discuss it. Perhaps the determination of the "success" of Hackney's paintings (and avant-garde art in general) requires a set of criteria more akin to the standards associated with the beautiful in chess: originality, daring, virtuosity, economy, and the expectation of the unexpected.

Sources for this essay are listed on the inside back cover.

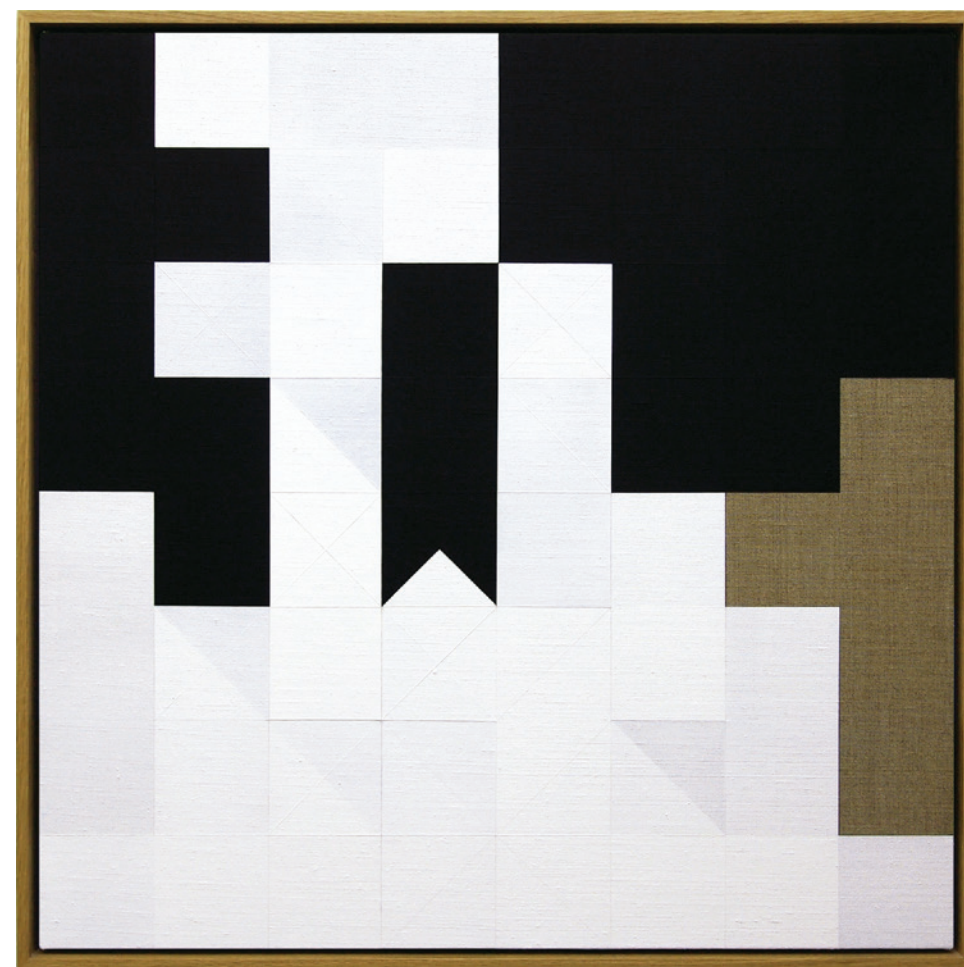


Chess Painting No. 69
(Suren vs. Duchamp, Strasbourg, 1924), 2016
 Oil on linen, walnut frame
 12 ½ x 12 ½ in.
 Courtesy of Tom Hackney

**J. Suren vs. Marcel Duchamp
 Strasbourg, 1924**

1. e4	c5	16. Re1	Nd7	31. Re3	h6
2. Nf3	Nc6	17. Be2	Bc6	32. Rg3	Kh7
3. Nc3	d6	18. Nd5	Qd8	33. Qd5	Qd7
4. d4	cx d4	19. Bxa5	Qe8	34. Rf3	Re6
5. Nxd4	g6	20. Nc7	Qc8	35. b3	Ra7
6. Nxc6	bxc6	21. Ba6	Bb7	36. a4	Kg7
7. Be3	Bg7	22. Nd5	Re8	37. Ra1	Qb7
8. Bd4	Nf6	23. Bxb7	Rxb7	38. Qxb7	Rxb7
9. Be2	0-0	24. Bc3	Ne5	39. Rd3	Rb6
10. 0-0	c5	25. Qe2	e6	40. Kf1	Kg6
11. Be3	Rb8	26. Ne3	g5	41. g4	Kg7
12. Rb1	Qa5	27. Nc4	Nxc4	42. Ke2	Kh7
13. Bd2	Bb7	28. Qxc4	Bxc3	43. f3	
14. a3	Qb6	29. Qxc3	e5		
15. Bf3	a5	30. Qd2	Qd8		

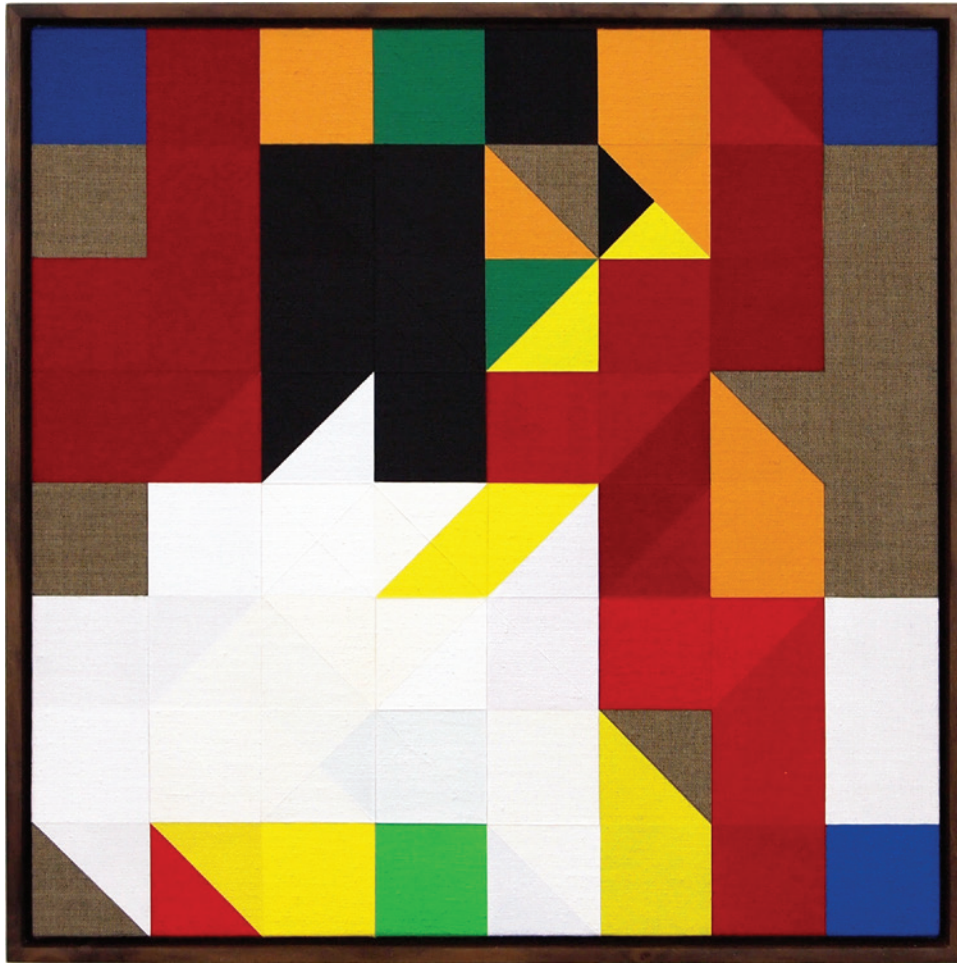
1-0



Chess Painting No. 68
(Opocensky vs. Duchamp, Folkestone, 1933), 2016
 Gesso on linen, oak frame
 26 x 26 in.
 Courtesy of Francis M. Naumann Fine Art, New York

**Karel Opocensky vs. Marcel Duchamp
 Folkestone, 1933**

1. c4	Nf6	16. 0-0	Ba6	31. R5c3	Bd5
2. Nc3	e6	17. Rfc1	c5	32. Nb8	Kf7
3. e4	d5	18. dxc5	Bxc4	33. Nc6	Bxc6
4. e5	d4	19. Ne5	Bd5	34. Rxc6	Ke7
5. exf6	dx c3	20. c6	Rdc8	35. Re1	Rbxc7
6. bxc3	Qxf6	21. c7	Qe7	36. Rxe6+	Kf7
7. d4	c5	22. Qc3	a6	37. Rxc7+	
8. Nf3	h6	23. Rc2	Be4		1/2-1/2
9. Bd3	cx d4	24. Qc5	Qg5		
10. cx d4	Bb4+	25. f4	Qf5		
11. Bd2	Bxd2+	26. Rc3	f6		
12. Qxd2	Nc6	27. Nd7	Qxc5+		
13. Qe3	0-0	28. Rxc5	Ra7		
14. Be4	Rd8	29. Rac1	Rb7		
15. Bxc6	bxc6	30. a4	a5		



Chess Painting No. 59
(Duchamp vs. Steiner, Paris, 1924), 2015
 Gesso and acrylic on linen, walnut frame
 16 ½ x 16 ½ in.
 Courtesy of Francis M. Naumann Fine Art, New York

Marcel Duchamp vs. Ender Steiner
Paris, 1924

- | | | | | | |
|---------|------|----------|------|----------|------------|
| 1. Nf3 | Nf6 | 11. a3 | c5 | 21. Bc4 | Nd3+ |
| 2. c4 | g6 | 12. e4 | Nf4 | 22. Bxd3 | Rxd3 |
| 3. b4 | Bg7 | 13. e5 | Qf5 | 23. Re1 | Qd7 |
| 4. Bb2 | 0-0 | 14. dxc5 | Qe4+ | 24. h3 | Bxf3 |
| 5. d3 | d5 | 15. Kd1 | Rd8+ | 25. Nxf3 | Nxc5 |
| 6. cxd5 | Nxd5 | 16. Nbd2 | Bg4 | 26. bxc5 | Rxc5+ |
| 7. Bxg7 | Kxg7 | 17. Kc1 | Qc6 | 27. Kb1 | Rd1+ |
| 8. Qd2 | Qd6 | 18. e6+ | f6 | 28. Rxd1 | Qxd1+ |
| 9. Qb2+ | Qf6 | 19. Ne5 | Qxe6 | 29. Ka2 | Qd5+ |
| 10. d4 | Na6 | 20. Nef3 | Rac8 | | 0-1 |

Memoirs of a Chess Square

by Jennifer Shahade, Chess Champion and author

At the beginning of many prestigious chess tournaments, players sign their name on particular light squares of commemorative chessboards, often with no intent beyond the thought, “On which square will my signature appear most elegant?” or, “Which square is left to sign?” And yet, specific squares hold so many memories of sacrifices both successful and failed as well as nightmares of a sacrifice or in-between move. This makes the question, “What’s your favorite square?” far more pertinent than the query frequently asked by journalists who don’t play chess: “What’s your favorite piece?”

I first saw Tom Hackney’s chess paintings in the exhibition *The Knight Turns Its Head and Laughs*, held at Greenwich University in London in 2011. The show included only a few chess paintings. Over traditional pub food by the Thames, Hackney told me that he uses the moves of a chess game to “generate form, whereby that form is encoded.” Greenwich is known for being the location where Greenwich Mean Time (GMT) is calculated. Fitting with that fact, while time is a crucial element in the chess game itself, we record the game to make it timeless. You can fit the entirety of a chess game in a small space using algebraic or descriptive notation, but reading it without a chessboard takes years of practice. And thus Hackney condenses timeless battles in his paintings, where you can choose to take in the contours of a battle in a glance, or look deeply to understand it more fully.

One of Hackney’s chess paintings, *Chess Painting No. 71 (Marcel Duchamp vs. E.H. Smith, Hyères, 1928)*, 2016, is inspired by a game I know well. In *Naked Chess* (2009), a video installation I created with Daniel Meiom, we reversed the iconic image of Marcel Duchamp playing against a nude woman, artist and author Eve Babitz, at the opening of Duchamp’s 1963 retrospective at the Pasadena Museum of Art. Using a chess set in which the pieces were carved nude figures, I played against a young naked man. This work was featured in the World Chess Hall of Fame’s show, *Ladies’ Knight: A Female Perspective on Chess*. We used the game Marcel Duchamp – E.H. Smith as a text for the piece, which Hackney also utilized for one of his chess paintings. The most memorable squares in this game are **d6** and **e5**. **D6** is the location of lovely exchange sacrifice, in which Duchamp gives up a rook for a bishop.



Julian Wasser
Marcel Duchamp Pasadena, 1963
 Black and white photograph
 Courtesy of Julian Wasser
 ©1963 Julian Wasser



Jennifer Shahade and Daniel Meiom
Naked Chess, 2009
 Black and white photograph
 Courtesy of the artists
 Photo: Jennifer Shahade and Daniel Meiom



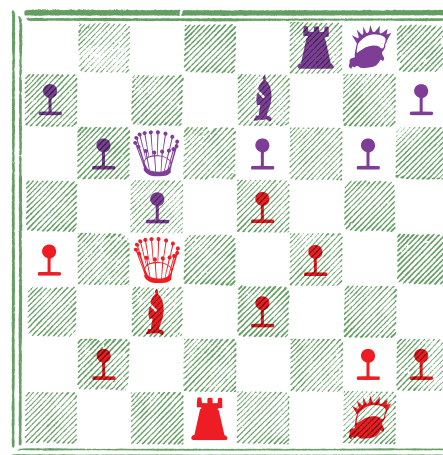
Chess Painting No. 71
 (Marcel Duchamp vs. E.H. Smith, Hyères, 1928), 2016
 Gesso on linen, oak frame
 16 ½ x 16 ½ in.
 Courtesy of Francis M. Naumann Fine Art, New York

**Marcel Duchamp vs. E.H. Smith
 Hyères, 1928**

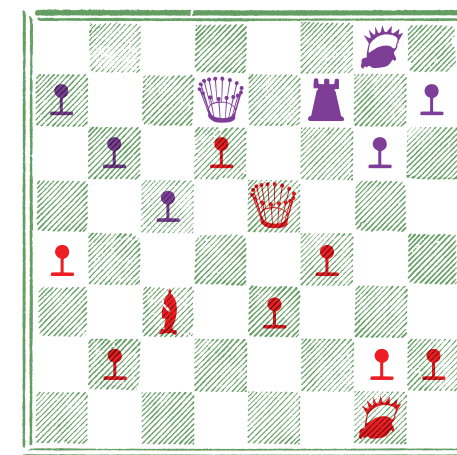
- | | | | | | |
|---------|------|----------|------|-----------|------------|
| 1. d4 | d5 | 9. e3 | fxe5 | 17. a4 | Rad8 |
| 2. Nf3 | Nf6 | 10. Bxa6 | Nxa6 | 18. f4 | Rxd1 |
| 3. c4 | e6 | 11. Qa4+ | Qd7 | 19. Rxd1 | g6 |
| 4. Nc3 | b6 | 12. Qxa6 | Be7 | 20. Rd6 | Bxd6 |
| 5. cxd5 | Nxd5 | 13. dxe5 | 0-0 | 21. Qxe6+ | Rf7 |
| 6. Bd2 | Ba6 | 14. 0-0 | c5 | 22. exd6 | Qd7 |
| 7. Ne5 | Nxc3 | 15. Rad1 | Qc7 | 23. Qe5 | |
| 8. Bxc3 | f6 | 16. Qc4 | Qc6 | | 1-0 |

In Hackney's piece, one can see how the exchanges on **d6** are reflected in the dual-colored square.

E5 is layered with multiple paths, including the dominating final position, in which the queen moves to the central square with devastating effect.



Position after 19. ... ♗g6



Final position

In my video installation, we imagined the position beyond the actual finale, where Smith resigned. I presumed that my opponent would allow me to use my queen to deliver the final checkmate on the **g7** square, which is blacked out in Hackney's painting.

As for me, I remember playing my favorite move on the **d5** square in a game that I have since misplaced, and so only the memory of a spectacular rook sac in the Dragon remains. My favorite chess position is Richard Réti's simply geometric composition, in which the first move, **Kg7**, shows the beauty of chess and geometry in the most elegant way possible. I feel a twinge of envy when I start teaching a newcomer to chess, as they will get to see this position for the first time.

I edited two pieces for US Chess's website called "64 Square Tour" (2007), written by Bart Gibbons and "64 Square Problem Tour" (2008), authored by Gary Kevin Ware. These articles showcased the most memorable moves on each square of the chessboard from **a1** to **h8**. I return to these articles again and again, because in addition to providing 64 beautiful chess moves, they form a larger whole in marking the entire chessboard: many squares within one master square. They also point to the tension inherent in defining aesthetics in chess. Which are more important, moves that cause amateurs and/or professionals to feel thrills of surprise or moves that are objectively strong?

In formal properties, surface level beauty, and deeper historical references, Hackney's paintings explore and expand the various ways that we can call chess art.

"All artists are not chessplayers, but all chessplayers are artists," Marcel Duchamp famously said, and we can now add that all paintings are not chess games, but all chess games are paintings.

Diagrams were created for the book *Marcel Duchamp: The Art of Chess* (2009) by Francis M. Naumann and Bradley Bailey. The game layout by Jean Sabrier is based on *Duchamp's Design of Chessmen*, Buenos Aires, 1918. Chess pieces: © Succession Marcel Duchamp / ADAGP, Paris / Artists Rights Society (ARS), New York 2016



Chess Painting No. 72
(Duchamp vs. Muffang, Strasbourg, 1924), 2016
 Gesso on linen, oak frame
 26 x 26 in.
 Courtesy of Francis M. Naumann Fine Art, New York

Marcel Duchamp vs. Andre Muffang
Strasbourg, 1924

1. Nf3	c5	13. Qc2	Rce8	25. Bg5	Ref8
2. c4	Nf6	14. Rfe1	e6	26. Ng1	Bc8
3. b3	g6	15. e4	Nh5	27. Rf1	Kg7
4. Bb2	Bg7	16. Bh3	Bd4	28. Ra2	h6
5. g3	b6	17. Nxd4	cxd4	29. Bc1	Rf6
6. Bg2	Bb7	18. Ne2	e5	30. Raf2	Qf7
7. 0-0	0-0	19. Bxd7	Qxd7	31. f4	g5
8. Nc3	d6	20. Kg2	f5	32. Qe2	gxf4
9. e3	Nbd7	21. f3	Rf7	33. gxf4	e4
10. d4	Rc8	22. Bc1	fxe4	34. Qxe4	Qg6+
11. d5	a6	23. Qxe4	Ng7		0-1
12. a4	Qc7	24. Bh6	Nf5		

TOM HACKNEY (b. 1977, UK) lives and works in London. Painting forms the basis of Hackney’s art practice as a mode, a vessel, and as a narrative. Often generated in response to specific historical material, Hackney’s work incorporates pre-existing forms and structures, which are recreated and replayed as a means of exploring more contemporary stakes.

Tom Hackney completed his Master of Fine Arts degree at Goldsmiths College, London, in 2008. Recent exhibitions include *Tom Hackney: Corresponding Squares: Painting the Chess Games of Marcel Duchamp*, Francis M. Naumann Fine Art, New York, and World Chess Hall of Fame, Saint Louis (2016); *Reduction, ZS Art*, Vienna (2015); *Compression*, Ormston House, Limerick (2015); *Tom Hackney: Minerals*, Ambacher Contemporary, Munich (2015); *Spring Exhibition 2015*, Kunsthal Charlottenborg, Copenhagen (2015); *The John Moores Painting Prize*, Walker Art Gallery, Liverpool (2014); *Tom Hackney: Tremors*, Breese Little, London (2013); and *Motion Capture: Drawing and the Moving Image*, Regional Cultural Centre, Letterkenny and Lewis Glucksman Gallery, Cork (2013).

His work is represented in public and private collections in Europe and the United States.

**TOM HACKNEY: Corresponding Squares:
 Painting the Chess Games of Marcel Duchamp**

May 19 - September 11, 2016

Related programming and a pdf of this brochure are available for download at worldchesshof.org. Donations support our exhibitions, education, outreach, and events.

Acknowledgements | The World Chess Hall of Fame acknowledges Dr. Jeanne and Rex Sinquefield, whose generous support makes our exhibitions possible. Special thanks to Tom Hackney; Francis M. Naumann; Dana Martin; Bradley Bailey; Jennifer Shahade; Dr. Ed Krčma; RKL Consulting; and Tony Rich, Ryan Chester, and the staff at the Chess Club and Scholastic Center of Saint Louis.

World Chess Hall of Fame | 4652 Maryland Avenue, Saint Louis, MO 63108 | (314) 367-WCHF (9243)
 © World Chess Hall of Fame. Printed on Recycled Paper.
 Share your #HackneyChess photos with @WorldChessHOF [f](#) [t](#) [i](#) [v](#) [y](#)

Front Cover: *Chess Painting No. 67 (Knoch vs. Duchamp, Hamburg, 1930) [Detail]*, 2016
 Gesso on linen, oak frame, 26 x 26 in., Courtesy of Francis M. Naumann Fine Art, New York

Back Cover: *Chess Painting No. 62 (Grimme, Luuring, Ree & Krabbe vs. Duchamp, correspondence game, 1961) [Detail]*, 2016
 Oil on linen, walnut frame, 12 ½ x 12 ½ in., Collection of Steve and Terri Hoffman

WCHOF Staff	Education, Outreach & Events	Gallery Manager	Installation & Research (cont.)	PR & Marketing
General Manager Joy Bray	Kathryn Adamchick Heather Craig Catherine Leberg Allison Rieke	Matt Dauphin	John King Magdalene Linck Brian McCulloch Jesse Nenninger Kristen O’Keefe Emily Scott Rob Storr Saylor Surkamp Nicole Tessmer	Nicole Halpin Kaleidoscope Management Group
Chief Curator Shannon Bailey	Finance Linda Davis Tiffany Hunt	IT Specialist Tammy Hyde	Installation & Research Eugenia Alexander Desiree Dixon Austin Fuller Jake Germann Nay’Chelle Harris Mac Holtsclaw Candice Jones	Q Boutique Josh Castleberry Brian Flowers
Assistant Curator Emily Allred	Graphic Design Aidan Douglas Paige Pedersen		Registrar Maggie Abbott	Research Assistant Catherine Niehaus
Development Elaine Hickerson Laura Schilli Lauren Stewart			Preparator Nick Schleicher	

The following interviews with Hackney provided valuable source material for "Layered Meaning" by Bradley Bailey:

"Interview with Tom Hackney – Shortlisted artist for the 2012 Summer Exhibition at the Royal Academy of Arts, London," *Aesthetica Magazine* (February 25, 2013), <http://www.aestheticamagazine.com/interview-with-tom-hackney-shortlisted-artist-for-the-2012-summer-exhibition-at-the-royal-academy-of-arts-london/>.

Lesley Guy, "Tom Hackney at the London Art Fair," <http://www.axisweb.org/archive/news-and-views/in-focus/laf-tom-hackney/>.

Hackney vividly described his working process in his email correspondence with Francis Naumann, who graciously shared this information with me.

The Duchamp quotations and much more about the impact of chess on the artist’s life can be found in the book *Marcel Duchamp: The Art of Chess* by Francis M. Naumann and Bradley Bailey, with game analysis by Jennifer Shahade (Readymade Press, 2009).



WORLD
CHESS
HALL *of* FAME